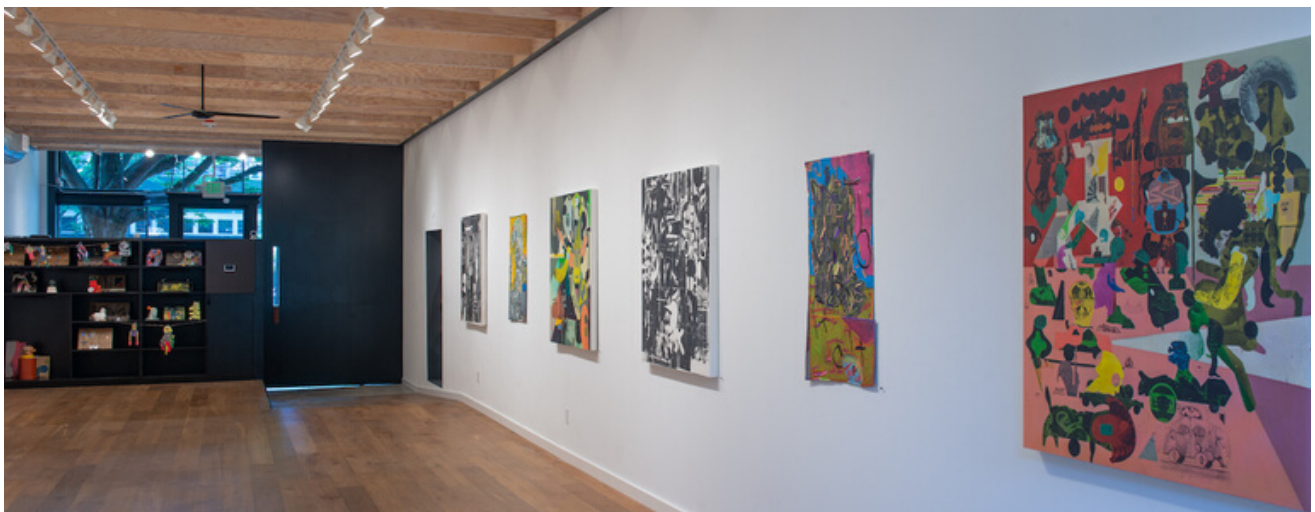


Robert Hardgrave

PEARL

September 10 - October 30, 2022



Catalogue contains select works
[Click here for Robert's complete exhibition viewing room](#)



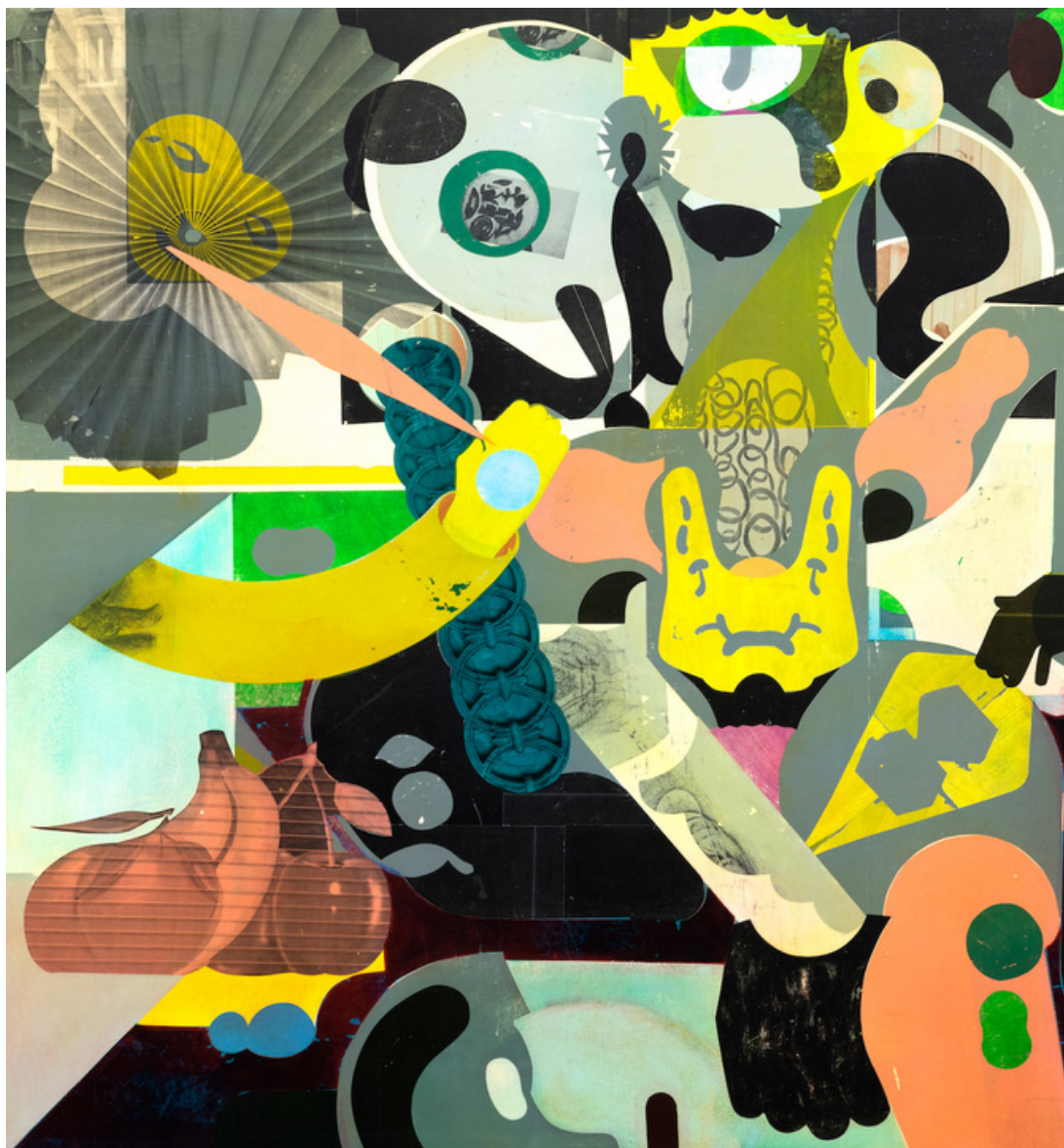
Crush, 2022
Acrylic transfer on linen
46" x 44"
\$5,800



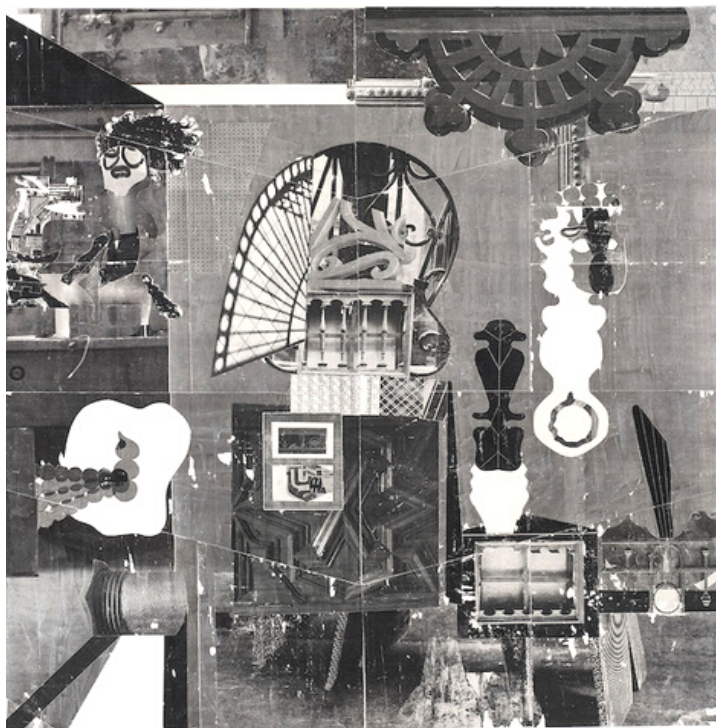
WSSC Rooftop, diptych, 2019
Acrylic toner on linen over panel
46" x 88" (44" per panel)
\$11,000



WSSC Underside, diptych, 2019
Acrylic toner on linen over panel
46" x 88" (44" per panel)
\$11,000



Not Deathmetal, 2022
Acrylic transfer on linen
46" x 44"
\$5,800



Gift Loss, 2019

Acrylic and toner on linen over panel

46" x 44"

\$5,800



WSCC Street Facing, 2019

Acrylic transfer on linen over canvas

46" x 44"

\$5,800



Wormridden

Acrylic and toner on linen over panel

46" x 44"

\$5,800

Binary Square, 2022
Acrylic on canvas
14" x 11"
\$950



Fore and Fro, 2022
Acrylic on Dibond
11" x 14"
\$950

The Flattening, 2022
Acrylic on linen over panel
20" x 16"
\$2,000



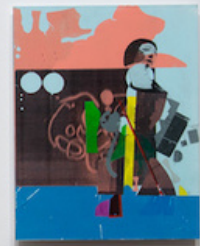
Tiny Texas, 2022
Acrylic on linen over panel
14" x 11"
\$950



Incipit, 2022
Acrylic on linen over panel
14" x 11"
\$950



The Crying Pig, 2022
Acrylic transfer on panel
24" x 18"
\$2,200





Habit Shop, 2022
Acrylic transfer on Dibond
14" x 11"
\$950



Where You Belong, 2022
Acrylic on Dibond
14" x 11"
\$950



The Horses Archer, 2022
Acrylic transfer on Dibond
14" x 11"
\$950



Cruiser, 2022
Acrylic transfer on Dibond
14" x 11"
\$950



40, 2022
Acrylic transfer on Dibond
14" x 11"
\$950



Destate, 2022
Acrylic transfer on Dibond
14" x 11"
\$950



Torme, 2022
Acrylic transfer on Dibond
14" x 11"
\$950



Riverstand, 2022
Acrylic transfer on Dibond
14" x 11"
\$950



The Storyteller, 2022
Acrylic transfer on Dibond
14" x 11"
\$950



Jib and Laguna, 2022
Acrylic transfer on Dibond
14" x 11"
\$950



Stay Away From Me, 2022
Acrylic transfer on Dibond
14" x 11"
\$950



The Key, 2022
Acrylic on Dibond
14" x 11"
\$950

Textiles



Last One Left Alive

Acrylic, thread on canvas

38" x 25"

\$3,600



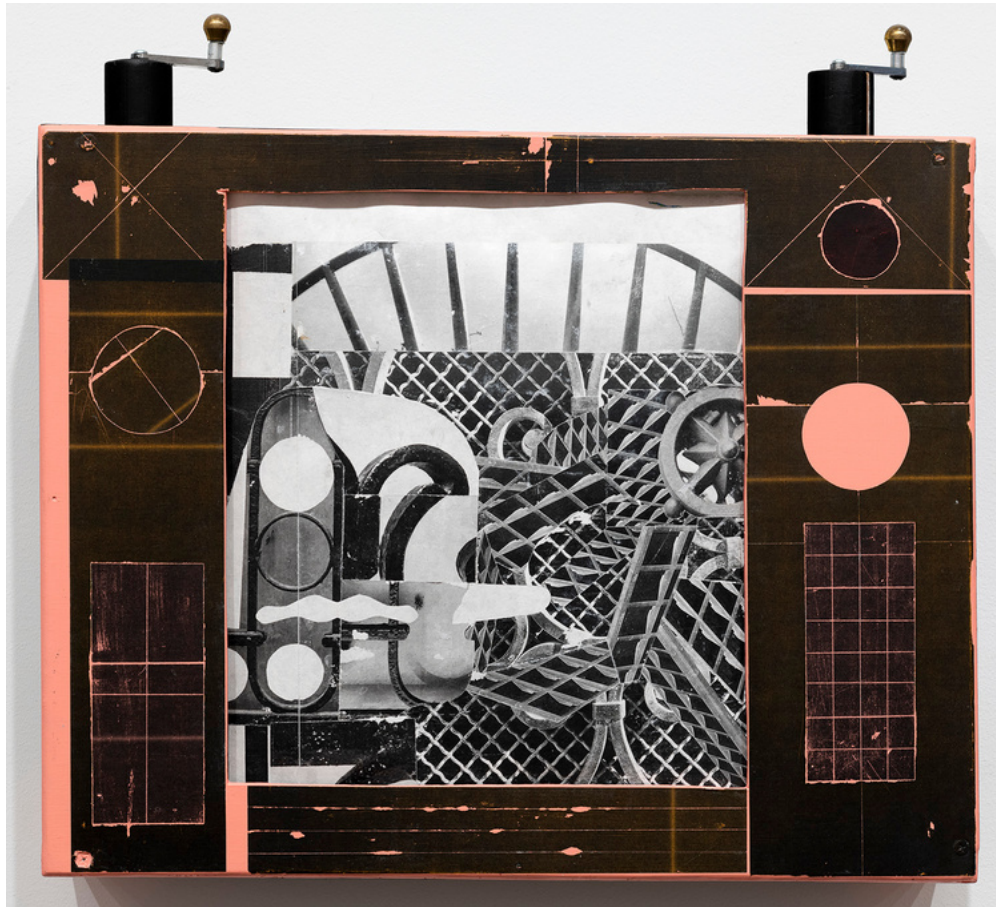
Terroir

Acrylic, thread on drop cloth and canvas

38" x 24"

\$3,600

Kinetic Sculpture



Pink TV, 2022
Acrylic transfer on wood
and paper
18" x 24" x 5"
\$2,500

Installation - Niche Market Main Space



Sculptures



Hole Sculpture, 2022
High density foam, acrylic
9" x 8" x 3"
\$650



Blackhead, 2022
Glazed terracotta and plaster
7" x 4 ½" x 4 ½"
\$550



Peepers, 2022
Glazed stoneware
6 ½" x 5" x 7"
\$850



Side View, 2022
Glazed stoneware
6 ½" x 4 ½" x 3"
\$650



Yellow, 2022
Plaster, acrylic, graphite
9" x 6" x 4"
\$650



Goya's Head, 2022
Glazed terracotta on found object
17" x 8" x 8"
\$1,200



Storyteller, 2022
High-density foam, acrylic
22" x 8" x 9"
\$2,500



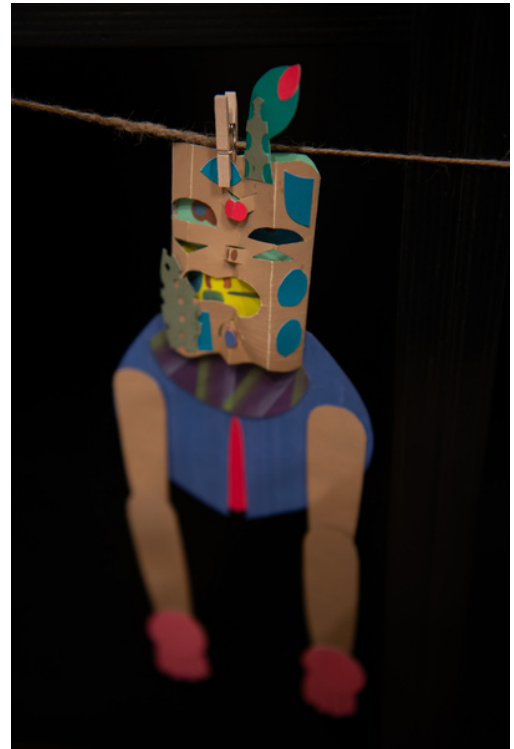
Blue Rider
High-density foam, acrylic
14" x 8 ½" x 3"
\$1,100



Painted Pulp Bits
Mixed media on paper pulp
Sizes vary
\$50



Paper Puppets
Mixed media on paper
Sizes vary
\$100



For Immediate Release – August 23, 2022

For images and media inquiries: A. McLean Emenegger
206.518.1046 / m@amcecreativearts.com

SEATTLE, WA

AMcE Creative Arts is over the moon to present

Robert Hardgrave, *PEARL*

September 10 – October 30, 2022

Opening reception: Saturday, September 10, 4p – 6p

Featured in the Niche Market Store Front: Los Angeles-based ceramicist Lili Todd

For upcoming events, please visit our [News & Events](#) page.



AMcE Creative Arts is thrilled to present a solo exhibition of Seattle-based artist [Robert Hardgrave](#). His show *PEARL* presents a survey of his marvelously varied and wildly imaginative artistic expressions, including mixed media paintings, ceramics, sculpture, puppets, animations, and scrolls both interactive and wall-mounted. Each work carries a connection to one another by incorporating reoccurring elements and characters that extend, exchange, and expand his works' visual dialogues. His process is about the joy and challenge of invention, improvisation, and experimentation.

Robert's paintings include a deconstruction of figuration amongst maze-like structures with the occasional insertion of a disembodied face, limb, or segment of construction. The work has a playful surrealism that conjures the likes of Joan Miro and a transposing of space reminiscent of Cubism, offset by whimsical, lowbrow illustrations. When translated, the imagery speaks to moments of Robert's daily life, both mundane and significant. This is the first time Robert has shown his work in Seattle since 2017.

PEARL also marks Robert's 30th year living in Seattle, his referring to it as "an anniversary celebration of sorts." The work in the show "is a love letter, a secret message, a rant, and a song to the city." *PEARL* is also suggestive of Robert's process: "I cover a lot of ground to uncover ideas. Experimental work aids to locate other surprises within the process, tools, or methods I didn't know were possible. I am unafraid traversing through different media, which helps me apply similar ideas to new forms of expression. There is nothing better than finding a new pearl."

Born in Oxnard, California, Robert has made a significant contribution to visual arts in the Pacific Northwest and was finalist for the 2014 and 2016 Cornish College of the Arts Neddy Award in painting. Robert has exhibited nationally and internationally, most recently in Copenhagen, DK and Madrid, Spain. Locally, Robert is a member of the [Duwamish River Artist Residency](#), which will have a 10th-anniversary group exhibition at AMcE in November 2022. His work is part of the permanent collections of Microsoft, Starbucks, King County, and the Achenbach Foundation for Graphic Arts. Robert is one of the four artists chosen through a Select Invitational to create architecturally integrated artworks for one of four locations on interior and exterior surfaces of the Pine Street “Walk-Up” retail spaces at the [Seattle Convention Center Summit](#).

Above image: *Crush*, 2022, acrylic transfer on linen, 46” x 44”

Featured in the Niche Market Store Front are the charming ceramics of Los Angeles-based [Lili Todd](#)

Upcoming events include:

October 15 – Art Book Pop-Up at AMcE

October 23 – Art Book and Zine How-To Panel Discussion

Details and participants TBA. For more upcoming events, please visit our [News & Events page](#).

AMcE | CREATIVE
ARTS

612 19th Avenue E
Seattle, WA 98112

###