

**FOR IMMEDIATE RELEASE – April 17, 2024**

For images and media inquiries: A. McLean Emenegger – 206.518.1046 / [m@amcecreativearts.com](mailto:m@amcecreativearts.com)

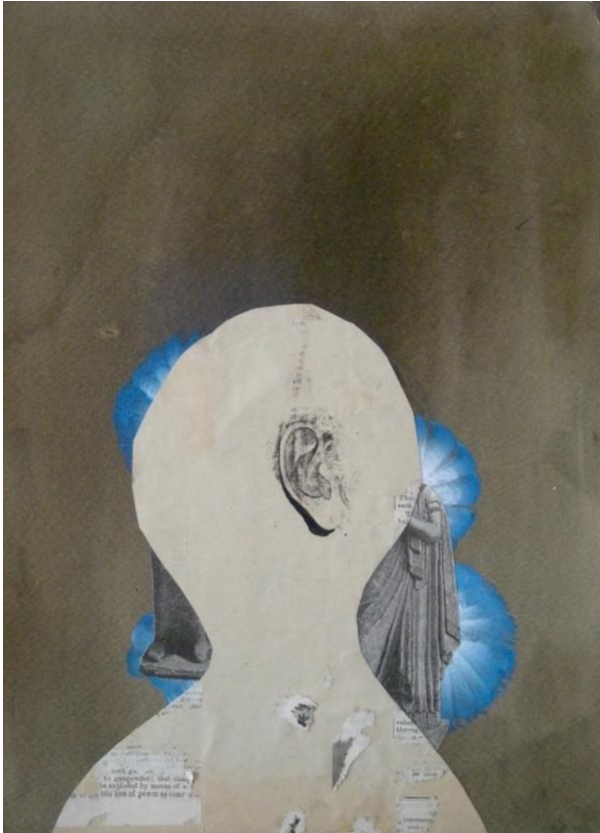
**SEATTLE, WA**

AMcE Creative Arts is pleased to present

***Embodiment*** – a group show of works that touch on memory and history

**May 18 – June 30, 2024**

**Opening Reception: Saturday, May 18, 5p – 7p**



The works in ***Embodiment*** contend with personal and collective histories, relationships, and memory. Through varying media, the seven featured artists reflect on the past’s influence on our present modalities and whether it offers confluence or opposition. Our human connection to the intricacies of external and internal systems and environments are also considered. The work’s elements and imagery serve as puzzle pieces of a bigger picture perspective.

Exhibiting artists include Alfred Harris, [Rachel Maxi](#), [Vander McClain](#), [Stas Orlovski](#), Megan Prince, [Brooks Salzwedel](#), and [Cara Tomlinson](#).

In keeping with the passage of time, AMcE is pleased to celebrate its third anniversary during *Embodiment* in June.

**About the artists:**

A lifelong diarist, painter [Alfred Harris](#)’s colorful, graphic compositions give expression to his memories and dreams.

Through her materials and construction, [Rachel Maxi](#)’s paintings, relief wall sculptures, and free-standing totems are a tangible synthesis of memories and interpretations of natural and built environments.

[Vander McClain](#) documents solitary moments within the vast continuance of time and nature through his gauche and ink drawings of found and natural objects discovered in remote areas of the American West.

...continued...

Themes of memory, migration, loss, and transformation permeate the delicate and dreamlike collaged drawings of [Stas Orlovski](#). Images of fallen statues, running men, heads, feet, eyes, flags, plants, and books represent the inescapable influence of the past on our present personal and collective constructs.

The delicate oil pastel and graphite drawings on paper by multimedia artist [Megan Prince](#) speak to the necessity of community and the importance of recognizing our interrelated humanity.

Using his unique process of graphite drawings embedded in resin, [Brooks Shane Salzwedel's](#) work focuses on natural and unnatural landscapes disconnected from their usual surroundings or places in time.

Based in figuration, [Cara Tomlinson's](#) paintings investigate the friction between opposing forces and states of being and how that tension can be navigated in the creation of physical and personal balance.

**AMcE will host free events during *Embodiment*:**

**Saturday, June 8, 3p**

Curatorial walk-through and an afternoon of artist talks with **Alfred Harris, Rachel Maxi, Megan Prince, and Cara Tomlinson**

**Sunday, June 30, 3p – 5p**

AMcE's third anniversary celebration and closing reception for *Embodiment*

See our [News & Events page](#) for more information.



**Top image:** Stas Orlovski, *Head with Statues*, ink, acrylic, xerox transfer and collage on paper, 15" x 11"

**Bottom image:** Cara Tomlinson, *The Artist*, 2019-23, oil on linen, 54" x 52"

AMcE | CREATIVE  
ARTS

612 19<sup>th</sup> Avenue E  
Seattle, WA 98112

Hours: Thur - Sun 11a - 6p; Wednesday by appointment

###